

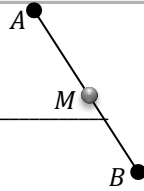
Geometry

1.3 Using Midpoint and Distance Formulas

Midpoint

What is it like?

- _____
- _____
- _____

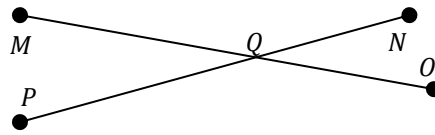


What are some examples?

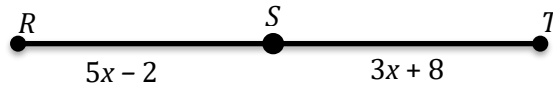
- _____
- _____
- _____

_____ is something that intersects a segment at its _____.

\overline{MO} bisects \overline{NP} at Q . If $PQ = 22.6$, find PN .



Point S is the midpoint of \overline{RT} . Find ST .



Midpoint Formula

Midpoint = _____

Find the midpoint of $G(7, -2)$ and $H(-5, -6)$

The midpoint of \overline{AB} is $M(5, 8)$. One endpoint is $A(2, -3)$. Find the coordinates of endpoint B .

Distance Formula

$$d = \underline{\hspace{2cm}}$$

What is PQ if $P(2, 5)$ and $Q(-4, 8)$?

Assignment: 24 #2, 4, 6, 8, 14, 16, 18, 20, 22, 24, 26, 28, 30, 32, 34, 44, 46, 48, 50, 59 = 20 total